

Notes

Notes are the basic units of music. Written music uses various shapes to indicate the different types

Open Note



Whole Note

Open Notes with Stems



Half Notes

Closed Notes with Stems



Quarter Notes

Closed Notes with Stems and Flags



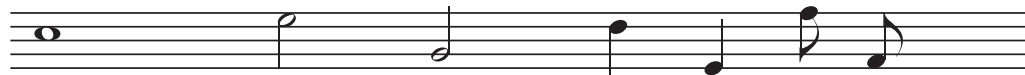
Eighth Notes

Write examples of the above notes in the spaces provided:

Continue across

		Whole Notes
		Half Notes
		Quarter Notes
		Eighth Notes

Notes are placed on a five-line staff:



Music for the guitar is written in the treble clef.

The treble clef sign is placed before each five-line staff. The treble clef sign looks like this:

It is derived from the Gothic letter G:

Here's how to make it: First, draw kind of a long skinny J. Then add the rest of the sign; make sure the tail curls around the second line of the staff.

Continue across

Bar lines are vertical lines that divide the staff into measures. The measures show the basic pulse of the music and make reading music easier by dividing the notes into shorter groups.

*This Theory book is correlated page-for-page with Alfred's Basic Guitar Method, books